



FORMATION EVALUATION LOG



WELL : TREFOIL-2

FROM (m): 930

TO (m): 1670

SCALE: 1/ 500

Country : : AUSTRALIA
Region : : TASMANIA
Field : : TREFOIL
Permit : : T/18P
Well Type : : APPRAISAL
Rig Name : : KAN TAN 4

POSITION
Latitude : : 39 53' 07.93" S
Longitude : : 145 22' 14.62" E
X (m) : : 360690.389
Y (m) : : 5583676.588
RT-Sealevel (m MSL) : : 26
RT-Seabed (m) : : 95

CASING SHOE SIZE / DEPTH
762mm (30") at (m MDRT) : : 153.00
340mm (13 3/8") at (m MDRT) : : 930.00
245mm (9 5/8") at (m MDRT) : :

Spud Date : : 06-10-2009
Total Depth Date : :
Total Depth (m MDRT) : :
Total Depth (m TVSS) : :
Status : :

ABBREVIATIONS

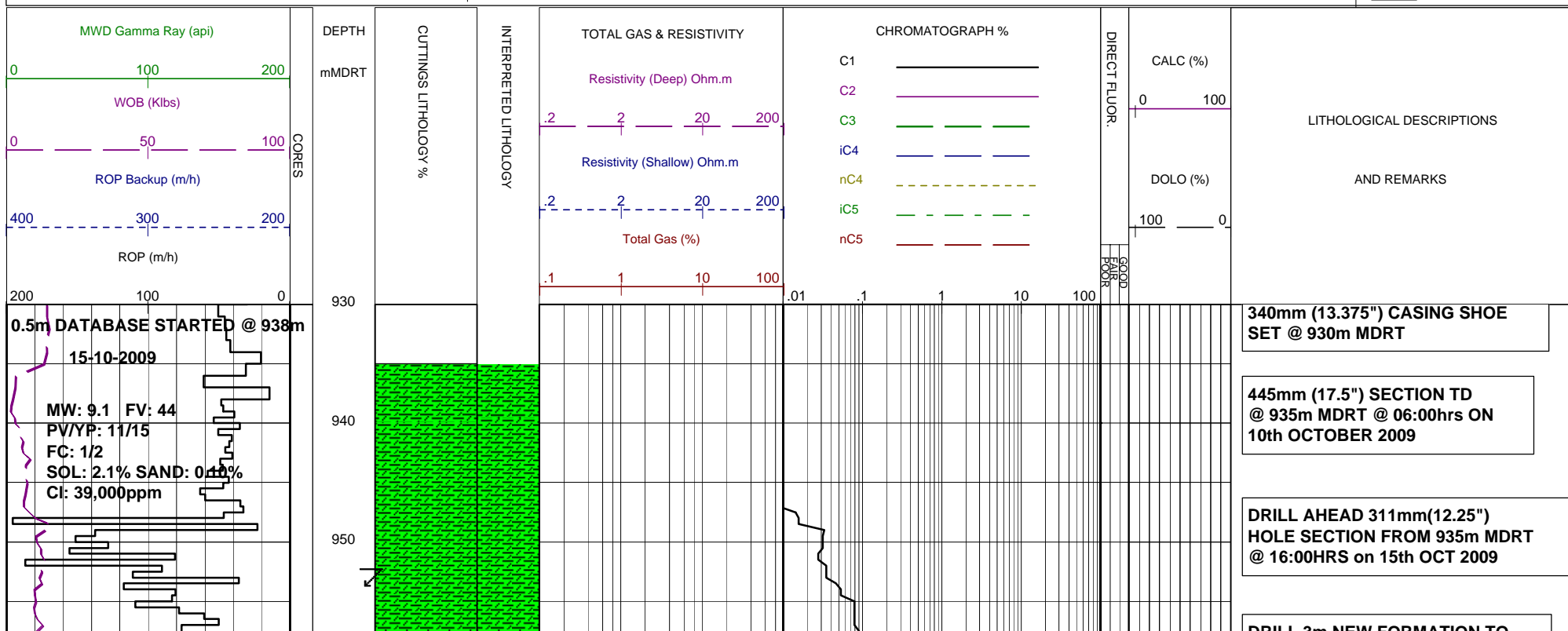
MW MUD WEIGHT NB NEW BIT
FV FUNNEL VISCOSITY RR RERUN BIT
PV PLASTIC VISCOSITY CB CORE BIT
YP YIELD POINT WOB WEIGHT ON BIT
FC FILTER CAKE RPM REVS PER MINUTE
SOL SOLIDS FLC FLOW CHECK
CR CIRCULATE RETURNS WL FILTRATE
SD SAND - % PR POOR RETURNS
S SALINITY - PPM NR NO RETURNS
RM MUD RESISTIVITY BG BACKGROUND GAS
RMF MUD FILTRATE TG TRIP GAS
C CARBIDE TEST STG SHORT TRIP GAS
LAT LOGGED AFTER TRIP CG CONNECTION GAS
DS DEVIATION SURVEY SG SWAB GAS
SVG SURVEY GAS

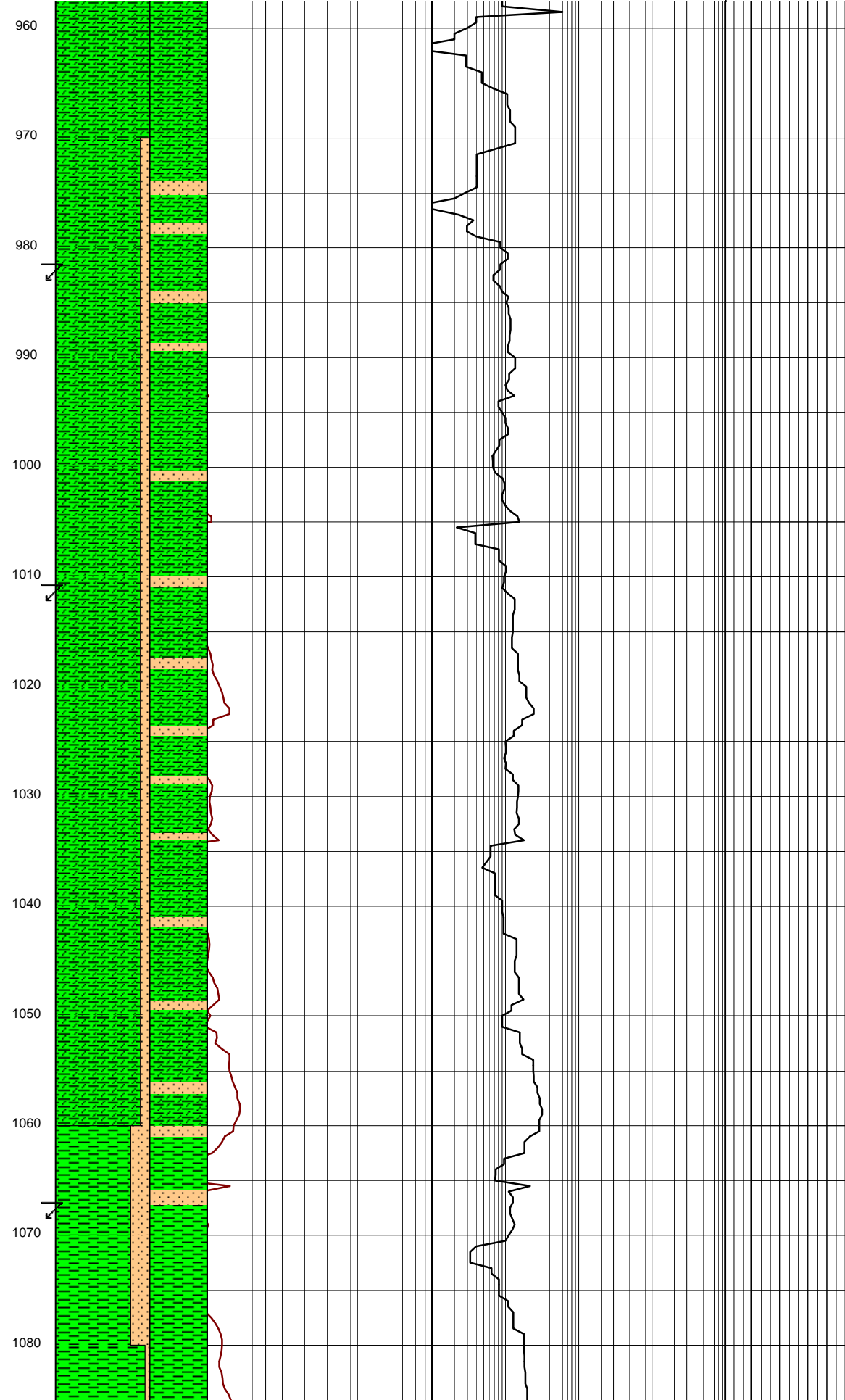
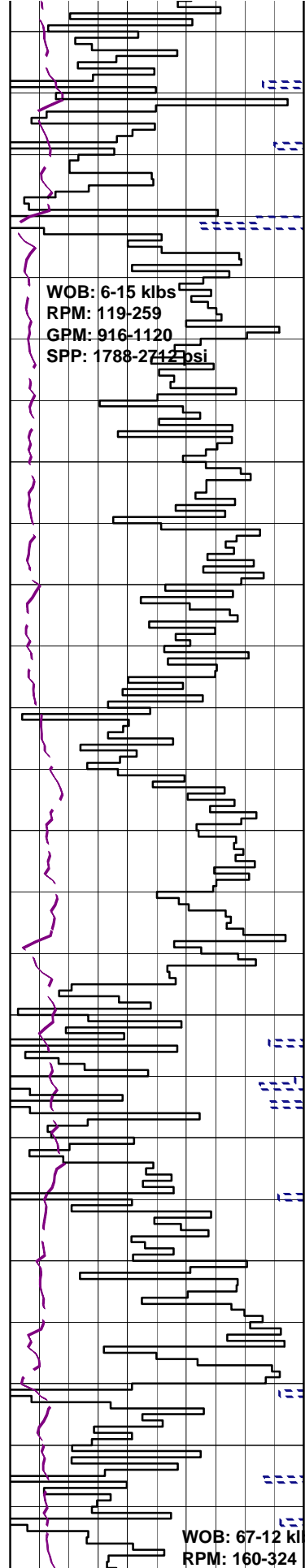
LITHOLOGY LEGEND

	Dolomite		Claystone		Argil Siltstone		Calcareous
	Calcurudite		Siltstone		Sandy Siltstone		Dolomitic
	Calcarenite		Sandstone		Calcareous Siltstone		Fossils
	Calcsiltite		Coal		Argil Sandstone		Foraminiferae
	Calcilutite		Intrusive Volcanics		Calcareous Sandstone		Carbonaceous
	Sandy Claystone		Volcaniclastics		Dolomitic Sandstone		Chert
	Silty Claystone		Tuff		Silty Sandstone		Pyrite
	Calcareous Claystone		Cement				Glauconite
	Argil Calcilutite						Mica

ENGINEERING

	Test
	FIT or LOT
	Mud loss
	Mud gain
	Deviation survey
	Core
	Shoe
	Calcmety





DRILL SH NEW FORMATION TO
930m and PERFORM LOT TO
1.81sg EMW @ 340mm (13.375")
CSG SHOE .

CLAYSTONE:med gry,v sft-sft,
rr frm,amorph-sblky,tr bryz &
shell frgs,tr pyr,35% calc clay.

SURVEY @ 952.44m
Incl: 0.80° AZI: 188.49°
TVD: 952.40m

SILTSTONE:med dk gry,frm-
hd,ang-sbblky,tr byrz & foram,
tr shell frg,30% calc clay.

SURVEY @ 981.35m
Incl: 0.71° AZI: 192.99°
TVD: 981.31m

SURVEY @ 1010.2m
Incl: 0.83° AZI: 198.72°
TVD: 1010.16m

CLAYSTONE:med-occ lt gry,sft-
occ frm,amorph-sblky,mnr
micmic,tr bryz,tr forams,tr
shell frg,30% calc.

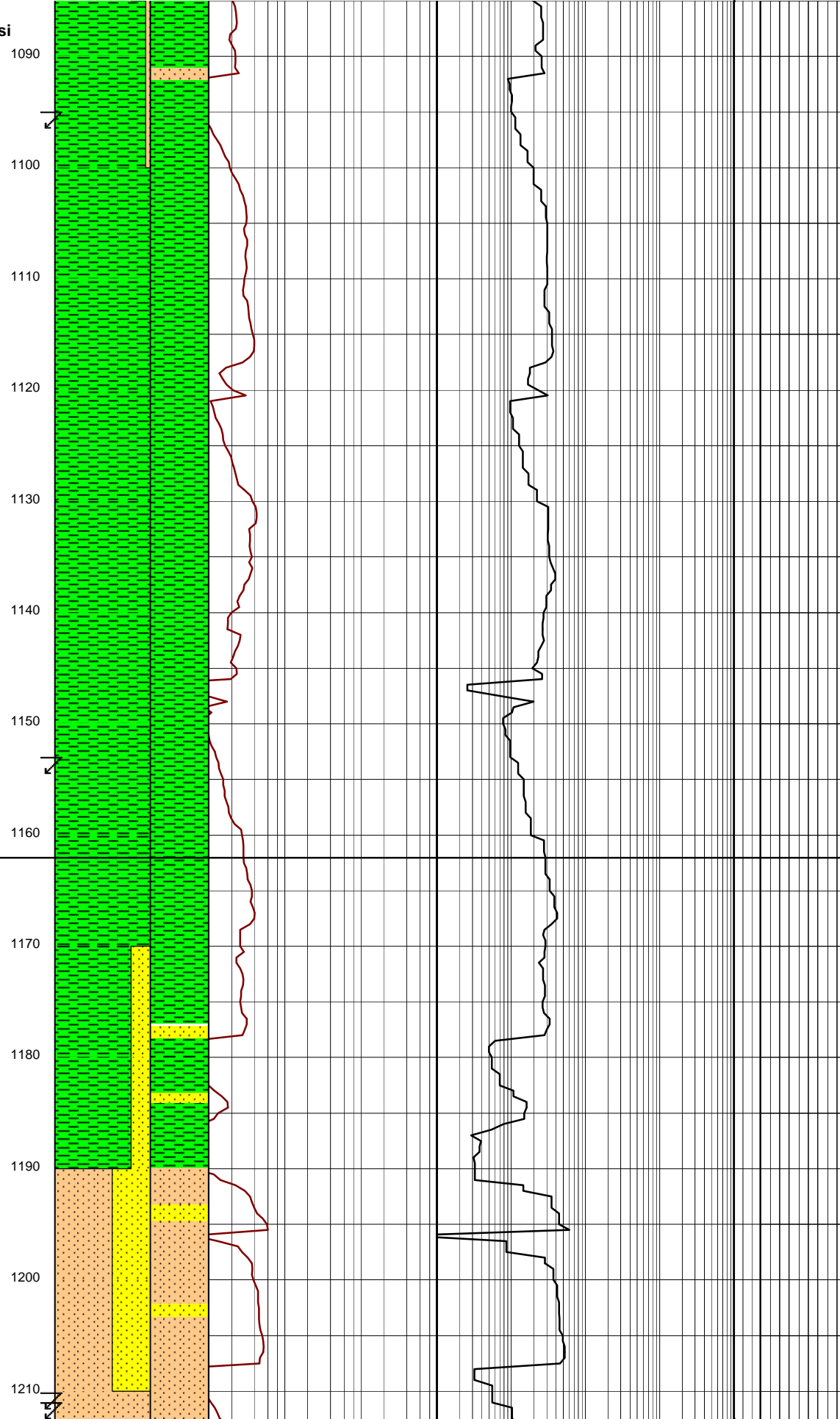
CLAYSTONE:med-occ lt gry,sft-
occ frm,amorph-sblky,mnr
micmic,tr bryz,tr forams,tr
shell frg,30% calc.

SURVEY @ 1067.16m
Incl: 0.87° AZI: 190.96°
TVD: 1067.16m

CALCAREOUS CLAYSTONE:med-dk gry,
sft-frm,blky-sbblky,tr micmic,foss
100% calc clay.

GPM: 916-985
SPP: 1801-2309 psi

WOB: 6-10 klbs
RPM: 109-238
GPM: 977-992
SPP: 2304-2322 psi



frags,forams,10% calc cly.

SURVEY @ 1095.87m
Incl: 0.84° AZI: 194.49°
TVD: 1095.82m

CLAYSTONE:med- dk gry,sft-frm,
sbblky-blky,tr micmic,shell frags,
corals,tr vf pyr aggs,10% calc cly.

SURVEY @ 1153.51m
Incl: 1.11° AZI: 191.81°
TVD: 1153.45m

UPPER ANGAHOOK:
1162m MDRT (1136m TVDSS)

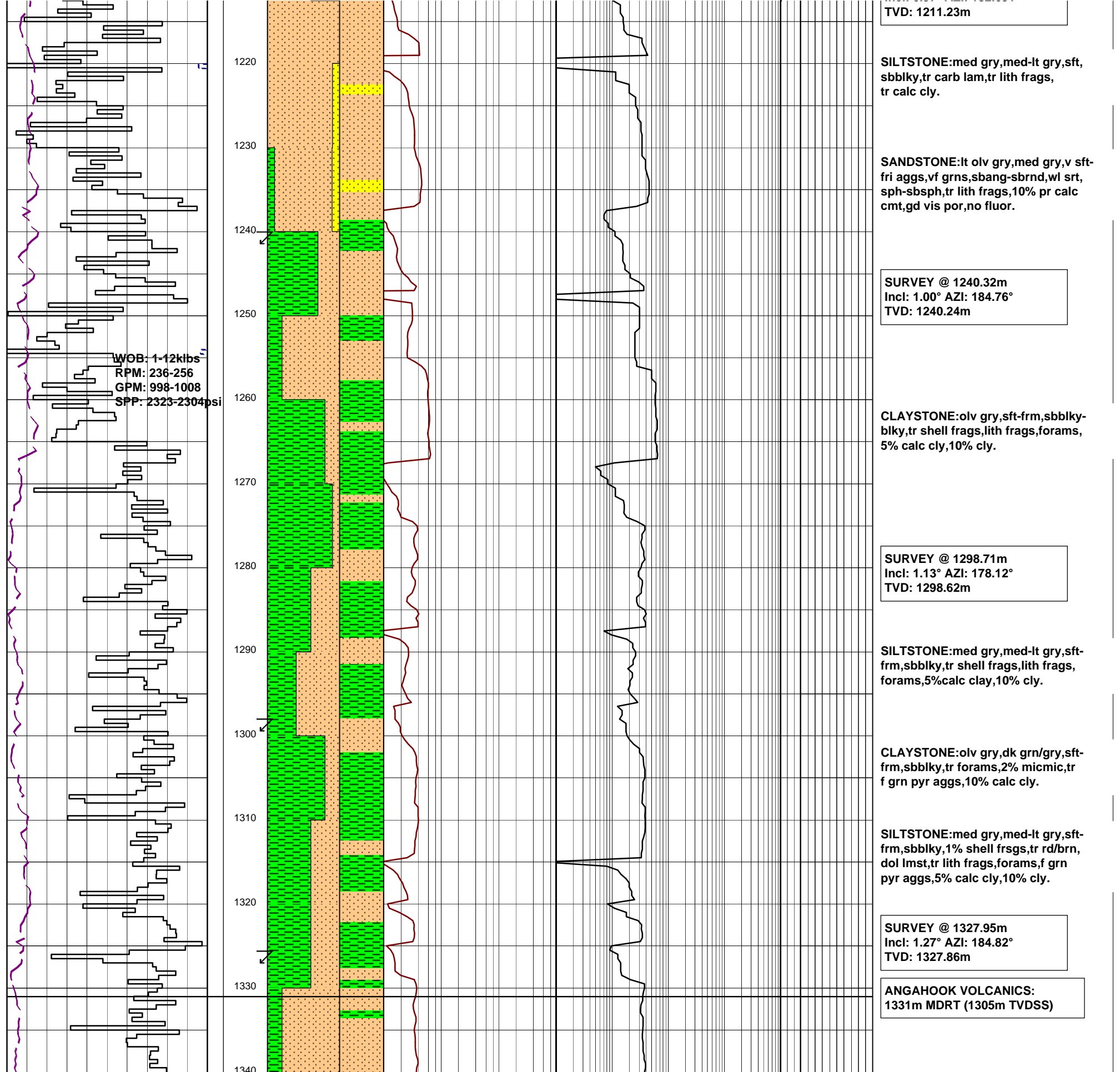
CLAYSTONE:med-dk gry,olv gry,
sft-frm,sbblky-blky,tr micmic,shell
frags,5% calc cly.

CLAYSTONE:olv gry,drk grn/gry,
sft-frm,sbblky-blky,tr grd to sbfiss,
tr vfg pyg as repl,tr shell frags,
tr micmic,5% calc cly.

SURVEY @ 1152.36m
Incl: 1.27° AZI: 187.06°
TVD: 1152.29m

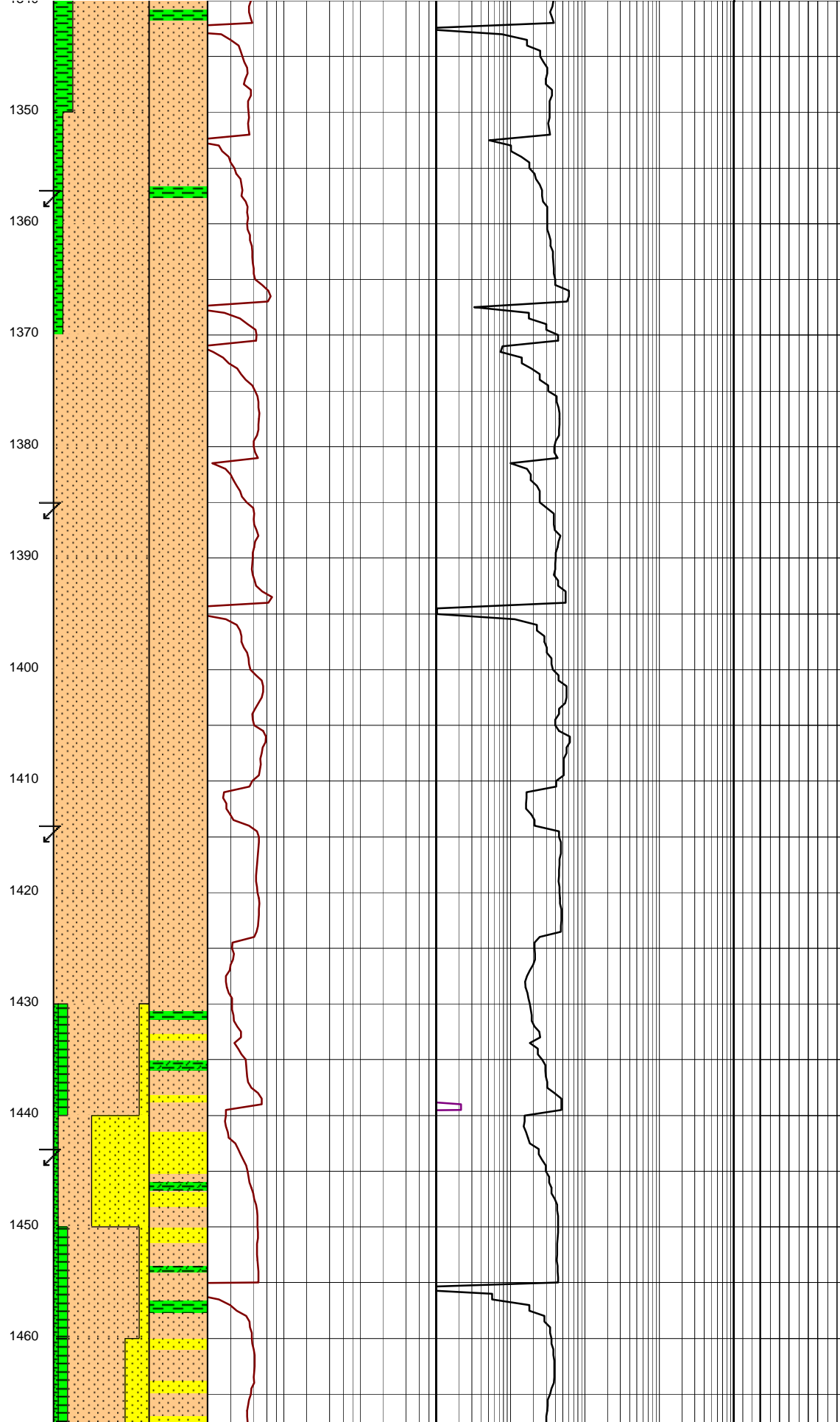
SANDSTONE:lt olv gry,med gry,v sft-
fri,vf grns,sbang-sbrnd,wl srt,sph-
sbsph,tr lith frags,10% pr calc cmt,
gd vis por,no fluor.

SURVEY @ 1211.30m
Incl: 0.97° AZI: 182.631°



WOB: 3-7 klbs
RPM: 163-251
GPM: 720-995
SPP: 1430-2399
SLIDING: 1422m-1433m

SLIDING: 1422m-1433m



SURVEY @ 1357.12m
Incl: 1.31° AZI: 184.97°
TVD: 1357.02m

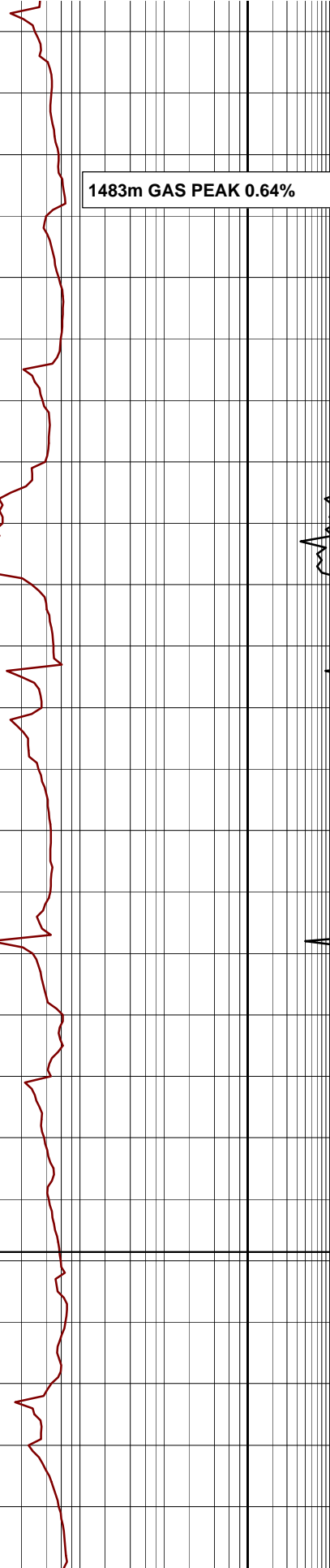
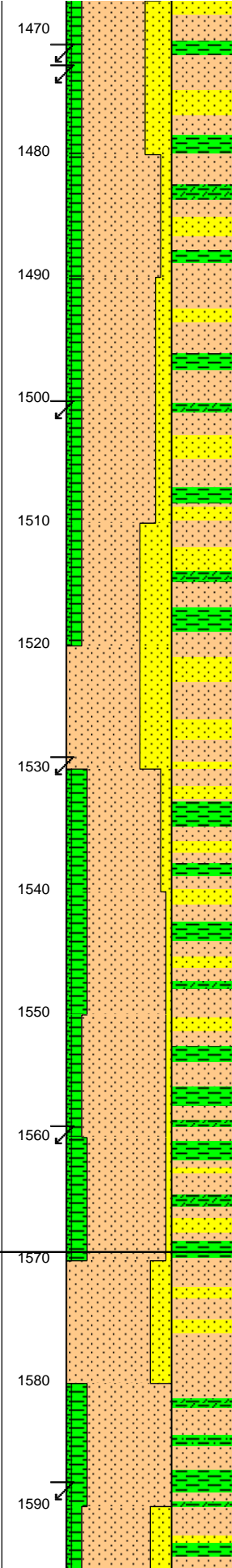
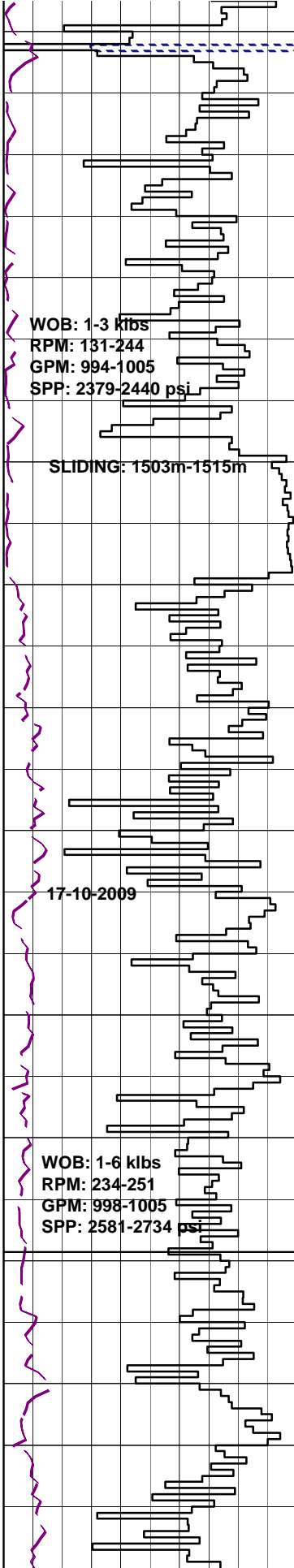
SURVEY @ 1385.95m
Incl: 1.43° AZI: 187.08°
TVD: 1385.84m

SURVEY @ 1414.18m
Incl: 1.33° AZI: 186.15°
TVD: 1414.68m

SILTSTONE: olv gry, med-dk gry,
med gry, sft frm, sbblky-blky,
loc 10 % vf qrtz sand grns,
tr alt lith frags, tr carb spks,
tr vf dissem pyr, tr glauc grns,
tr shell frags, 5% calc cly, 15%
cly, grd to arg sltst.

SURVEY @ 1443.26m
Incl: 1.42° AZI: 189.23°
TVD: 1443.14m

SILTY SANDSTONE: olv grv. med



dk gry,vf grns, subrnd, wl srt, subsphr to sphr qrtz grns with 0 to 20% lithic cmpnt, sft-frm, sub blocky-sybfiss, tr c carb spks, 5% calc cmt, pr vis por, no fluor.

SURVEY @ 1471.76m
Incl: 1.41° AZI: 188.77°
TVD: 1471.63m

SILTSTONE:olv gry,med gry, tr dk gry,sft-frm,sbblky, tr carb spks,lithic frag,glauc, 5% calcareous clay,10% very fine quartz sand.

SURVEY @ 1500.56m
Incl: 1.44° AZI: 186.77°
TVD: 1500.42m

SILTSTONE:olv gry,med dk gry, sft-frm,tr fri,ang to sbblky, tr carb spks,calcite crys,glauc, lithic frags,5% calc clay,10% clay,15% vf quartz sand.

SANDSTONE:med dk gry,dk gry, vf grn,subrnd,wl srt,sub spher-spher qrtz grns with 10-15% lithic frag,5% calc clay cmt, 10% clay comp,por vis por,no fluor.

SURVEY @ 1529.74m
Incl: 1.02° AZI: 177.87°
TVD: 1529.59m

SILTSTONE:olv gry,sft-frm, subblky,tr glauc,lithic frag, 5% calc clay,15% clay,10% very fine qrtz grns,tr v lt gry highly degraded volcanics.

SURVEY @ 1559m
Incl: 1.11° AZI: 183.32°
TVD: 1558.85m

UNDIFF OLIGOCENE FM:
1569m MDRT (1543m TVDSS)

SANDSTONE:med blu gry, vf grn,subrnd,wl srt to v wl srt,spher qrtz grns with 10% lithic comp,mod hd-hd,ang-sbblky,tr micro mica, hgly cmt,10% calc cmt, 10% clay comp,no vis por, no fluor.

SURVEY @ 1588.15m
Incl: 1.05° AZI: 181.86°

